

# HOLBERG FARM

## LAND USES & ASSOCIATED ECOSYSTEM SERVICES

Thirty residential homes border Holberg Farm. Local residents use the public trails for pleasure and exercise. The farm contributes to a sense of community identity and pride.

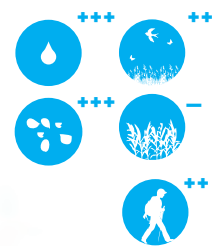
Ponding in fields reduces productivity of farm land. It benefits the community by holding water on fields, slowing surface run-off and reducing flooding downstream.



PUBLIC TRAILS



PASTURED



PONDING



GARDEN



SHELTER-BELT



MIXED FOREST

### LAND USE TYPES:

- BARN
- INFRASTRUCTURE
- CULTIVATED
- PASTURED
- UNDER-UTILIZED CORNER
- ORCHARD/GARDEN
- BIG OLD TREE
- SHELTER-BELT
- MIXED FOREST
- PONDING
- ROAD
- FAMILY HOME
- PUBLIC TRAIL
- RECREATION



CULTIVATED FIELDS

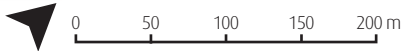
Shelter-belts and mixed forest make up **7%** of the farm's land-base. Annually, these trees remove an estimated:

- 8 lbs (3.7 kg) of Carbon Monoxide
- 64 lbs (29 kg) of Ozone
- 207 lbs of (94 kg) of Particulate Matter
- 42.4 T (39.4 metric T) of Carbon Dioxide

Source: [www.treetools.org/icanopy](http://www.treetools.org/icanopy)

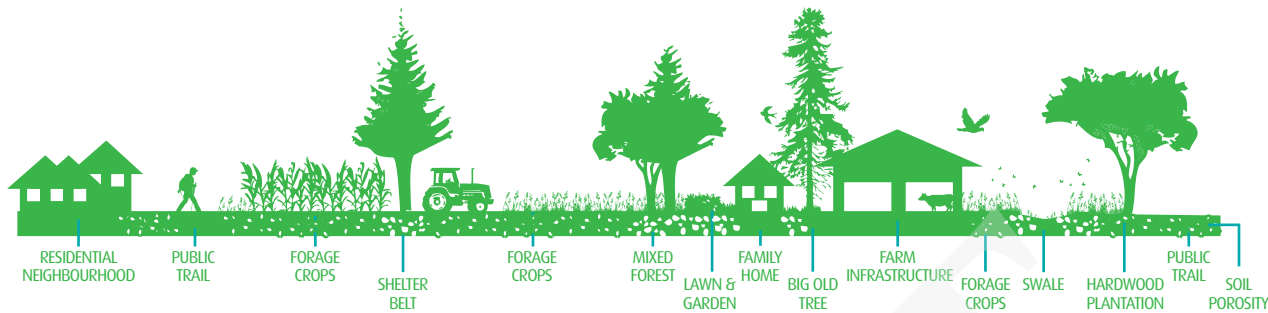
### ECOSYSTEM SERVICES:

- MARKET GOODS
- AESTHETIC APPEAL
- RECREATION OPPORTUNITIES
- AIR PURIFICATION
- WATER INFILTRATION
- CLIMATE REGULATION
- SOIL RETENTION
- POLLINATION
- WILDLIFE HABITAT



# GOODS & SERVICES ON THE FARM

## HOLBERG FARM ECOSYSTEM



## PROCESSES



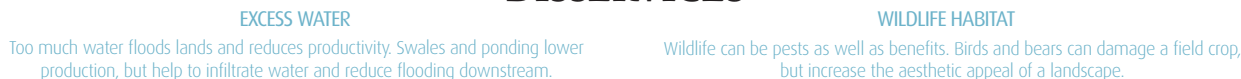
## GOODS & SERVICES



## BENEFITS



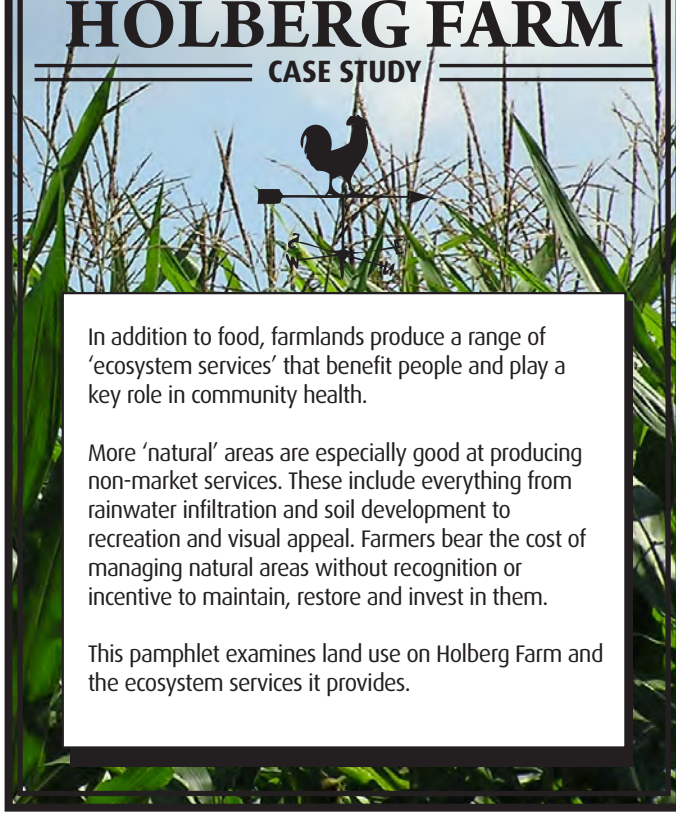
## DISSERVICES



## ECOSYSTEM GOODS & SERVICES ON DAIRY FARMS IN THE FRASER VALLEY OF BC

# HOLBERG FARM

### CASE STUDY



In addition to food, farmlands produce a range of 'ecosystem services' that benefit people and play a key role in community health.

More 'natural' areas are especially good at producing non-market services. These include everything from rainwater infiltration and soil development to recreation and visual appeal. Farmers bear the cost of managing natural areas without recognition or incentive to maintain, restore and invest in them.

This pamphlet examines land use on Holberg Farm and the ecosystem services it provides.

